

Interior Architecture

Ohio University

College of Fine Arts

School of Art+Design

ART 3600, Interior Architecture Studio III

Fall Semester 2018

Tuesdays & Thursdays: 1:30 - 4:20 Grover Center W330

Matthew Ziff, Associate Professor, Area Chair

Office: W 325 Grover Center

Office Hours: MW: 10:45-11:45, TTH: 12-1

Telephone: 740. 593. 2869

E-mail: ziff@ohio.edu

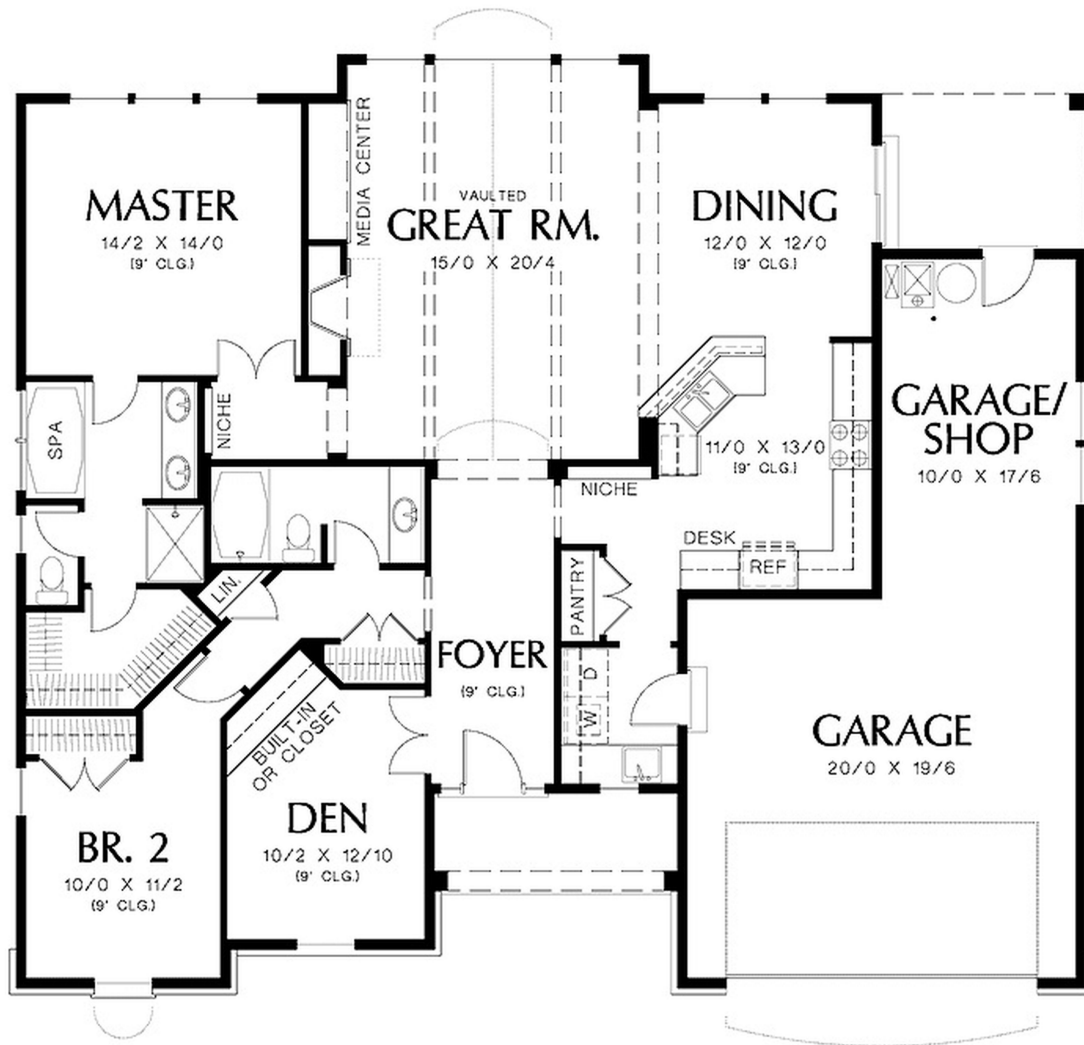
Typical schematic design floor plan drawings

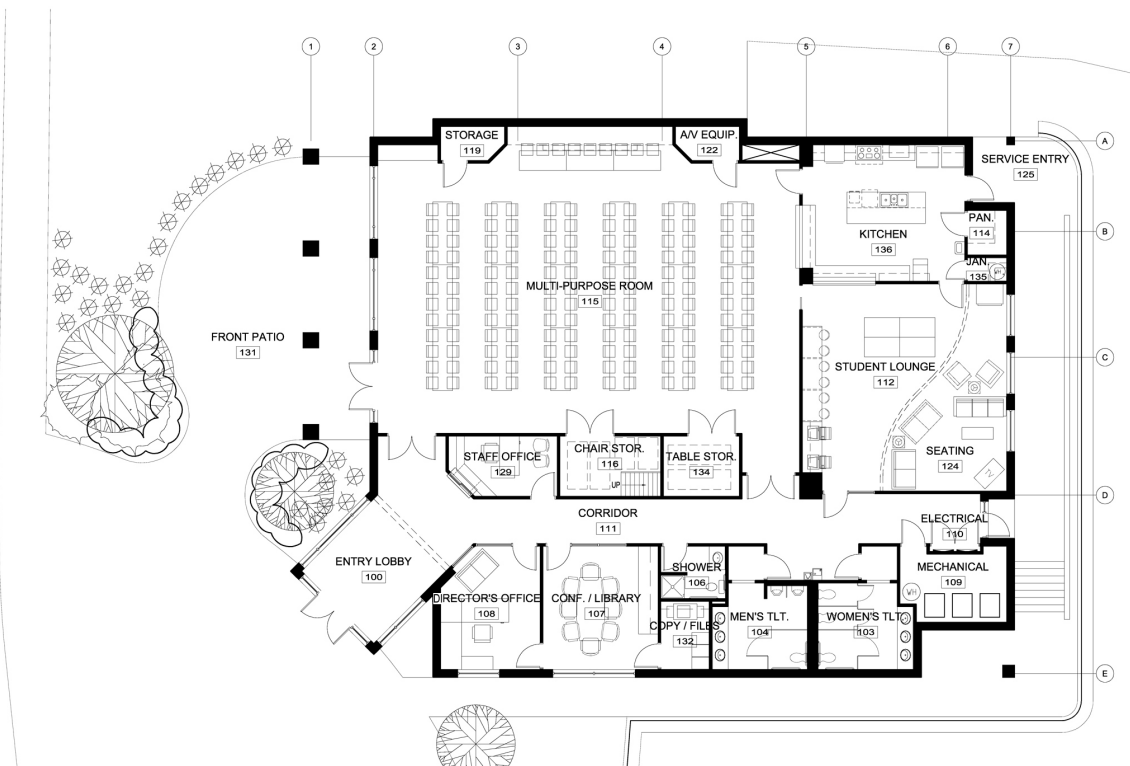
- All vertical walls are poche'd black.
- Horizontal surfaces that are viewed from above, such as table tops, benches, and counters are drawn as outlines without any infill/rendering/poche.
- Doors are either shown poche'd black, or as two lines with space between them.
- Room names are included.
- No dimensions are needed in schematic drawings.
- Room square foot sizes are *sometimes* included.

The following are a few examples of typical schematic floor plan drawings. The conventions used in these drawings are typical, widely used, but not always how some designers might do their drawings. In the world of design these things are not 'rules' or 'laws', but rather conventions. Some conventions are very widely, almost universally used, others vary from one office to another.

For our floor plan drawings please use these graphic conventions:

- poche *all* walls that are approximately 5' tall or greater
- show doors and door swings
- include room names
- include a north arrow
- a project title

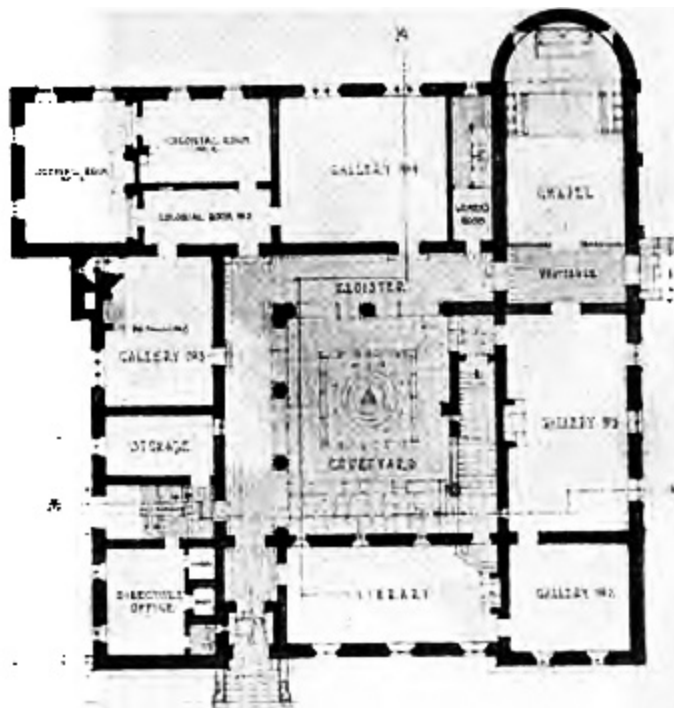


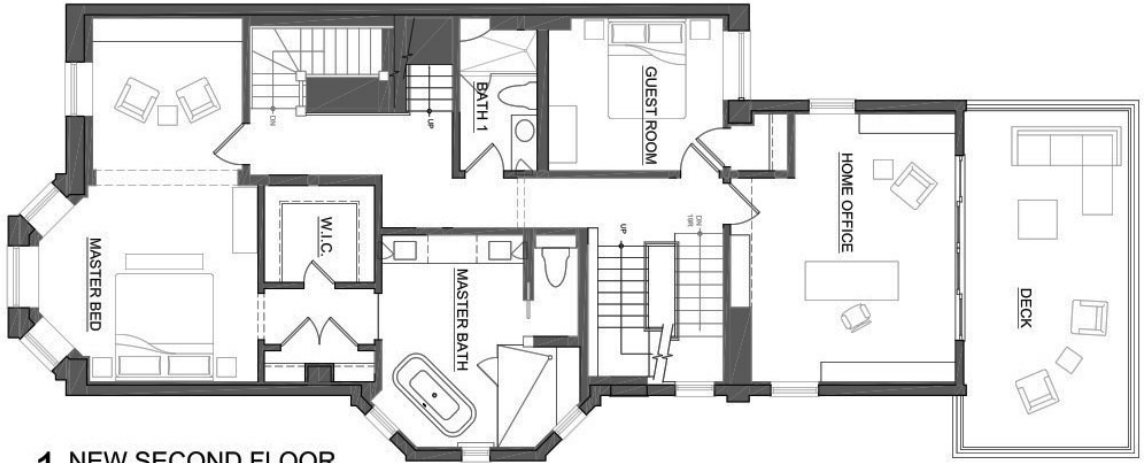


Floor Plan

Scale: 3/16" = 1'-0"

Building Area = 5,611 g.s.f.



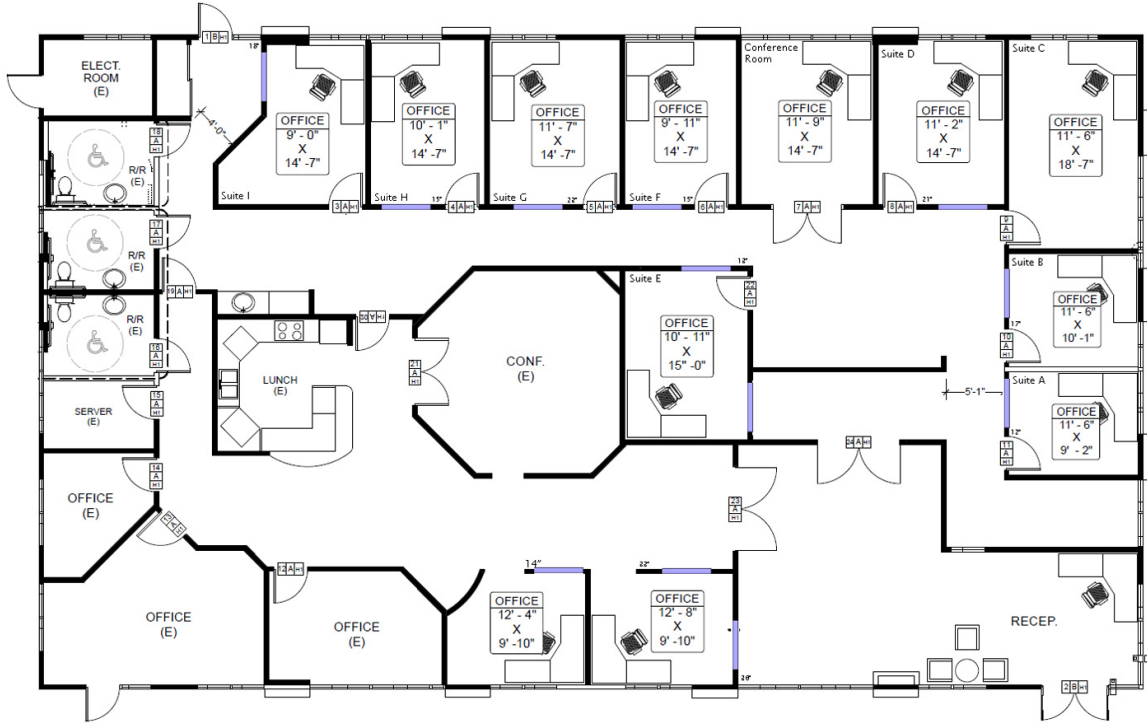


1 NEW SECOND FLOOR
 3/16" = 1'-0"



TYPICAL OFFICE FLOOR

- | | |
|------------------------|----------------------|
| 1 Conference room | 6 Apartments |
| 2 Offices | 7 Storage |
| 3 Public space | 8 Parking |
| 4 Bathroom/locker room | 9 Green roof/terrace |
| 5 Outdoor space | |





**ARBORETUM PROFESSIONAL CENTER
FIRST FLOOR PLAN**

